



2016 The 17th Asian Rowing Championships

Jiashan, China

September 9th -13th , 2016

Bulletin No.2

Asian Rowing Federation

President: WANG Shi
Vice-Presidents: Achmad SUTJIPTO
Nicolas EE
Vahid MORADI
HUNG Jui-Chang
Secretary-General: ZHANG Dan
Executive Director: ZHANG Yin
Committee Chairs: (by alphabet)
Competitive Committee: Chris Perry
Events Committee: Edy Suyono
Marketing & Promotion Committee: Wang Ching-Tang
Masters Committee: Wu Ji ning
Para Rowing Committee: Seung-Hoon HAN
Rowing Development Committee: Admiral Chainarong Charoenruk
Sports Medicine Committee: Mikio Hiura
Umpiring Committee: Liang Bing

Tel: +86-10-67188998/67188919

Fax: +86-10-67188998

E-mail: office_arf@sports.cn

Website: www.arfrowing.org

Chinese Rowing Association

President: LI Quanhai
Secretary-General: CAO Jingwei

Tel: +86-10-67113681

Fax: +86-10-67112793

E-mail: chnrowing@sina.com

Organizing Committee

Person in charge: Mr. Wang Zhong wei

Tel: 0573-89101213

Fax: 0573-84051931

E-mail: jiashantiyuju@sina.com

International Jury

The International Jury members will be appointed by ARF Umpiring Committee.

1. General Introduction of Jiashan, China

Jiashan county, lies to the southeast of the Yangtze River Delta, located in the center area of the city agglomeration of the Yangtze River Delta, is one of the top 100 counties in overall strength in china, and the only Scientific Development Pilot County authorized by China.



Jiashan county has 506.68 square kilometers (data from the local government), 14.29% as the aquatic area. Jiashan has 6 towns and 3 street offices, 574.2 thousand residents, good water fairways and abundant resources. Jiashan has been well known for its agriculture, silk, and culture.



Jiashan, located at the intersection of Jiangsu province, Zhejiang province and Shanghai city, is the center of the four cities-Shanghai, Hangzhou, Suzhou, and Ningbo. Jiashan's location has made it the hub of the Yangtze River Delta, with highways and railways linking to the whole country. Jiashan has railway stations-Shanghai-Hangzhou railway (Jiashan station), Shanghai-Hangzhou high-speed railway (south station of Jiashan), Shanghai-Hangzhou high-speed railway, Shanghai-Jiaxing-Huzhou highway, Tingfeng highway. Jiashan will have all its towns linked to highways in 15 minutes when the Suzhou-Jiaxing-Ningbo highway is constructed. Besides,

Jiashan has the national road 320 passing through the county, and lies 100 kilometers less to Jiaxing port, Yangshan port, and Shanghai port.



2. Visa

Citizens of Asian countries are required to obtain visa to enter China. For details of visa requirements and application, please complete the visa application form and send these with the passport's softcopy to the Chinese Rowing Association before **10th August, 2016**.

Person in Charge : Ms. Yang Ming

Phone : +86-10-67113681; +86-18810361046

E-mail : chnrowing@sina.com

3.Competition information

3.1 Date: September 9th -13th , 2016

3.2 Provisional Programme:

Heats	9th	September
Repechages	10th	September
Semi-finals	11st	September
Finals	12nd-13rd	September

Schedule

Date (September)	6 TU	7 WE	8 TH	9 FR	10 SA	11 SU	12 MO	13 TU
Arrival & Check-in								
Boat Rental and Draw								
Course Open								
Jury Meeting								
Team Manager Meeting								
Heats								
Repechage								
Semi-finals								
Finals								

(Note: This schedule is preliminary and some items may be subject to change. Changes will be notified to all Federations.)

3.3 Events(22)

Men (9): M1X, M2X, M4X, M2-, M4-, M8+, LM1X, LM2X, LM4-

Women (8): W1X, W2X, W2-, W4-, W4X, LW1X, LW2X, LW4X

Para-rowing(5) : ASM1X, ASW1X, TAMIX2X, LTAMIX4+, LTAMIX2X

Group A: LM2x, M4-, M2-, M2x, LW1x, LW4x, W4-, W1x

Group B: LW2x, LM4-, W2-, W2x, LM1x, W1x, M4x, M1x, M8+

For the Para events may not be so critical but will be four and double and double up

3.4 Entries

Preliminary Entry must be received by 10th July 2016. The Preliminary Entry must include the events to be entered, the total number of athletes in the team, and the number of officials accompanying the team.

Final Entry is due by 10th August, 2016. The completed Final Entry must include all necessary information for each crew, including name with date of birth of each athlete, all team members and substitutes and officials.

Entry Forms for Preliminary and Final Entries are attached to this Bulletin. These should be filled in and forwarded to the Organizing Committee, with a copy to ARF headquarters, by the stipulated date.

Please note: If any crew withdraws from 3 hours before the draw until the end of the regatta, it will be fined 500 CHF or equivalent. It is only accepted due to medical reason approved by the event doctor.

3.5 Opening Time of Course

The venue will be officially open from Wednesday 7th September for crews to train.

3.6 Uniform

All competitors must wear the official competition uniform of their national federation.

3.7 Intercom Requirement

Every delegation may take their own intercom equipment. Before using them, report your frequency to the OC.

3.8 Weather in September

Average daily maximum air temperature (°C)	27.7°C
Average daily minimum air temperature (°C)	20.7°C
Average relative humidity (%)	82%
Average monthly rainfall (mm)	7.4mm
Predominant wind direction	Southeastern
Average wind speed	2.6m/s
Maximum wind speed	4.9m/s

4. Boats and Equipment

All boats and other equipment must comply with FISA Rules of Racing.

The OC will provide boats for rental in each event. Requests for renting boats should be notified in the attached Boat and Oars Rental Form on or before **10th August, 2016.**

Rental boats will be allocated by random boat draw.

Boat/Oars	Price	Deposit
Single scull (1x)	USD30 per day	USD1000 per team

Double scull (2x) & Pair (2-)	USD40 per day	
Four & Quadruple Scull (4-, 4x)	USD60 per day	
Eights(8+)	USD80 per day	
Oars/sculls	USD10 per day	USD 200 per team

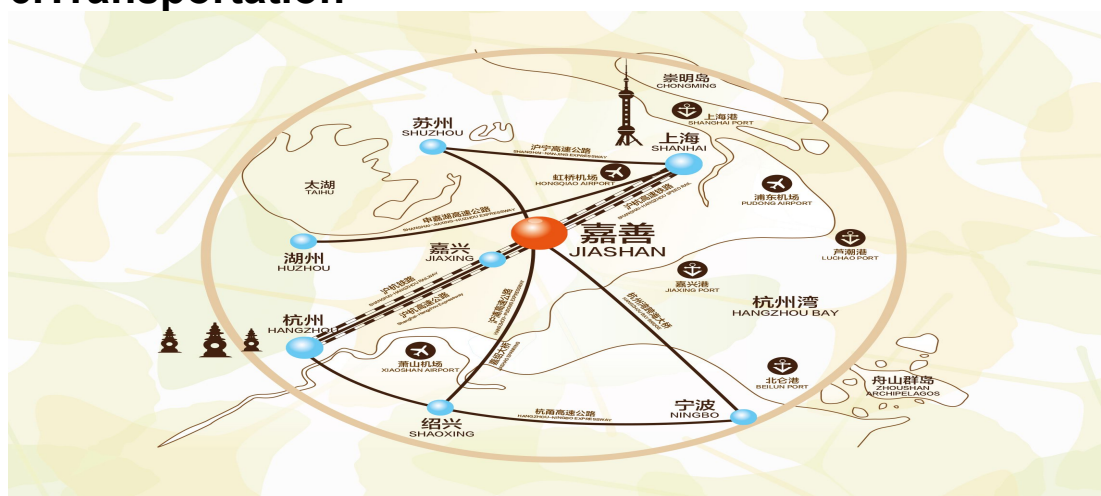
The blades of all oars/sculls must be painted on both sides in the colors of the respective Federations. Each team is highly recommended to bring their own oars and sculls.

Teams wishing to transport their own boats to Zhejiang should notify the Organizing Committee at an early stage.

5.Accreditation

In order to reduce the time taken for accreditation processing, all teams are requested to complete the accreditation forms and send these to the Organizing Committee before 20th August 2016. This should include coaches and team officials.

6.Transportation



The venue is about 85 kilometers from Shanghai Hongqiao Airport and 100 kilometers from Shanghai Pudong Airport and Hangzhou Xiaoshan Airport (Hangzhou Airport is not recommended because of G20 Forum); The pick up service from airport to hotel is charged: 300\$ per single trip (33seats) . After receiving Flight Information, if teams arrive at similar time, teams will share one bus with formula: 300\$/passengers number. OC encourages bus sharing for energy saving and environmental protection.

For this purpose all teams should fill in and send the form of the Transport Information in Arrival/Departure Form to the Organizing Committee before 20th August 2016.

7.Accommodation

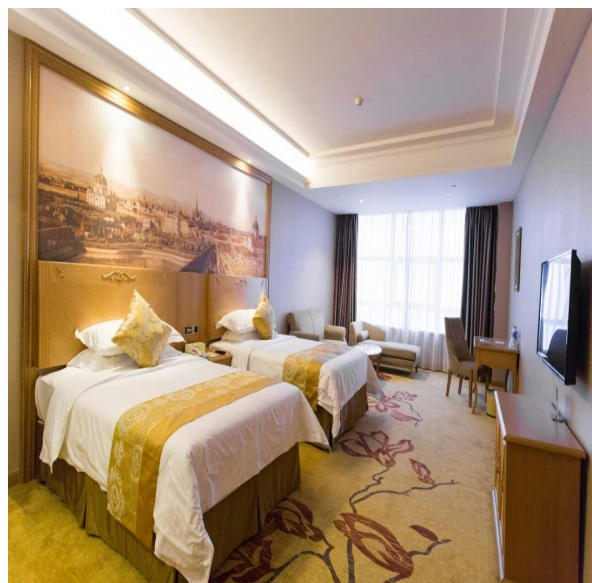
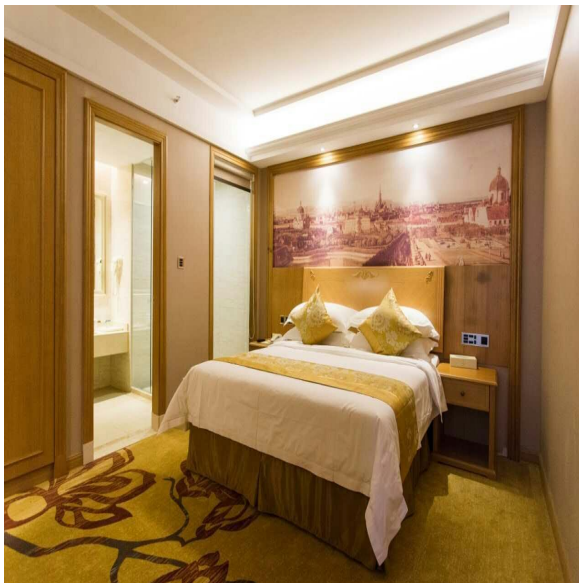
Bookings should be made through the Organizing Committee by 20th July 2016. The two hotels are the same price and quality (4 stars). OC will arrange rooms based on the availability. So teams just need to fill the number and type of room instead of hotel name. The hotel reservation form is attached with this bulletin.

Hotel Cost is payable to the Organizing Committee and due on arrival and no later than prior to the first race.

Note: The price has included the three meals per day and the local transportation (from hotel to venue and back, excluding pick up service from airport to hotel and back).

7.1 Jiashan Vienna Hotel (4 stars)

The Vienna international hotel is the chain hotel subordinated to the Shenzhen Vienna hotel group. The hotel is designed according to the new European classicism, and has 260 various elegant rooms. The restaurant, meeting center will make your business trip comfortable.



Price Rate:

Single Room : 100 USD per person per day;

Double Room : 90 USD per person per day.

7.2 JiaShan Golden Jasmine Hotel (4 stars)

JiaShan Golden Jasmine Hotel is located in the commercial and administrative center of JiaShan. It is the first four-star hotel here. The hotel has 202 rooms, with administrative floor, No-smoking floor, female floor. The restaurants serve both local specialties and other delicious cuisines, which can meet your demands. Meeting center equipped with complete facilities can satisfy your meeting requirements. The hotel has multitudinous recreation service items, including of KTV club, sauna center, outdoor tennis court, gym room and so on.



Price Rate:

Single Room : 100 USD per person per day;

Double Room : 90 USD per person per day.

8.Venue

The venue is the Fenhu Water Sports Center.



1.Starting 2. Meeting center 3.Audience stand 4. Finishing tower 5. Boat parking

WELCOME TO JIASHAN!

Annex 1:Preliminary Entry Form----- 10th,July ,2016
Annex 2:Hotel(Room) Reservation----- 20th,July ,2016
Annex 3:Final Entry & Boat & Oar Rental Form-----10th,August,2016
Annex 4:Final Entry By Name And Boat-----10th,August,2016
Annex 5:Visa Application Form-----10th,August,2016.
Annex 6:Accreditation Form-Athletes-----20th,August,2016
Annex 7:Accreditation Form-Officials-----20th August,2016
Annex 8:Arrival and Departure-----20th,August,2016

Please note: All the Entry Forms should send to **OC**
email:jiashantiyuju@sina.com and **cc** both to **ARF: office_arf@sports.cn**
and **cc** to **CRA: chnrowing@sina.com**